

CHICKEN WIRE FRAME

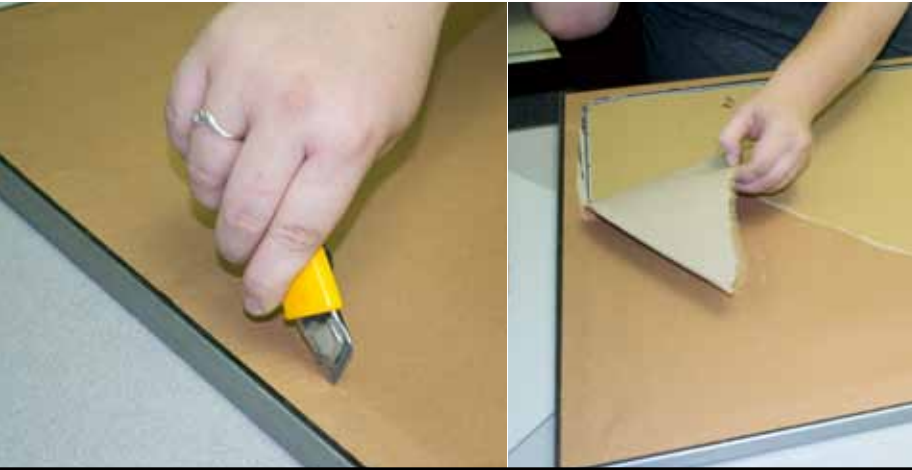


YOU WILL NEED:

- 20 Gauge 1" Chicken Wire
- 2 Eyelets/Picture Frame Hooks
- Drill
- Foam/Felt Material for Backing
- Hammer
- Hand Stapler and 3/8" Staples
- Hot Glue Gun and Glue Sticks
- Jute Twine
- Mini Clothespins
- Picture Frame of Your Choice
- Safety Glasses
- Spray Paint
- Wire Cutters
- Work Gloves
- X-Acto Knife



STEP 1



STEP 2



STEP 3



01

Remove the glass and photo from your frame. If your frame has a cardboard or paper backing, you will need to remove it. Use a box cutter or X-acto Knife if needed. Make sure there are no remnants of the paper sticking out the sides of the frame.

02

Remove any hardware, especially the tabs that hold the picture and glass in place, with steel nosed pliers.

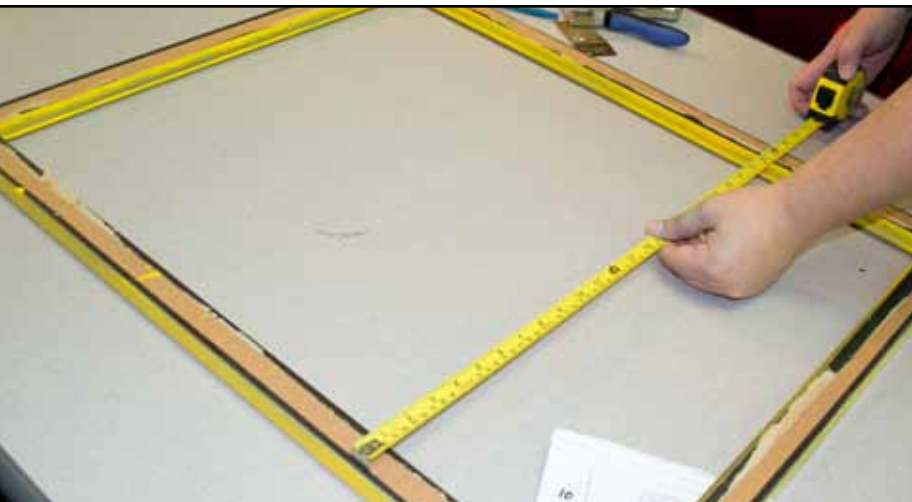
03

Prior to spray painting your frame, use a cleaning agent and paper towel to wipe off any dust and dirt. Dry it off completely before spray-painting.

STEP 4



STEP 5



STEP 6



04

In a well-ventilated area such as a garage or a backyard, lay out a piece of cardboard large enough to give you ample space around your frame. This will ensure that no excess spray paint will get on the grass or floor around you.

Be sure to hold your can of spray paint at least 6 inches away when spraying and always move your can in a steady, constant motion. Apply a second coat when dry.

05

When your frame is completely dry, flip it over and use a measuring tape or ruler to measure the length and height of the frame so you can determine how big you need to cut your chicken wire.

06

Cut your chicken wire to the length you determined in Step 5, making sure to leave a little extra room – you want your piece of chicken wire to stretch across the entire frame.

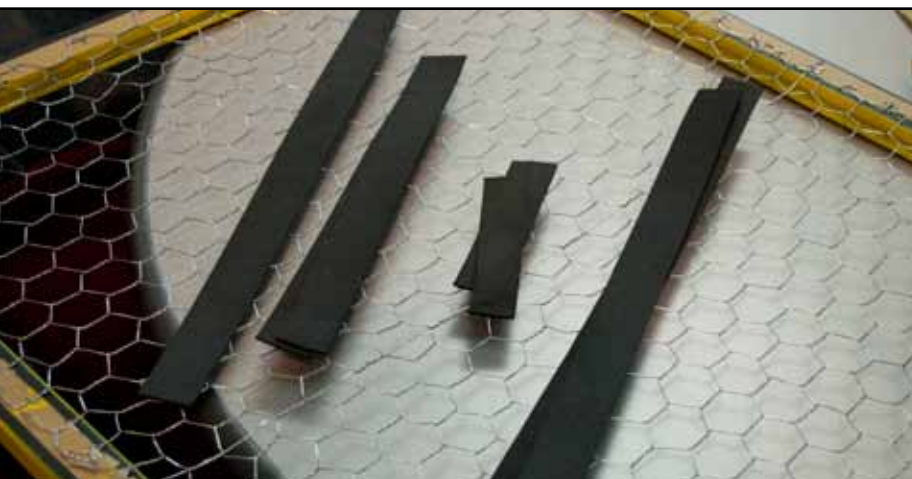
STEP 7



STEP 8



STEP 9



07

Flatten your sheet of chicken wire as best you can so there are no waves or bumps.

When you are satisfied with how flat it is, use a hand stapler or upholstery stapler to secure the chicken wire to the back of the frame. Staple in as many areas as you want, making sure to get a staple in each corner and two on each side at minimum.

08

After your sheet of chicken wire is stapled to the back of the frame, use wire cutters to trim the excess chicken wire into the inside of the frame. Hammer the staples and existing wire until flattened. Try to leave as few sharp edges as possible.

09

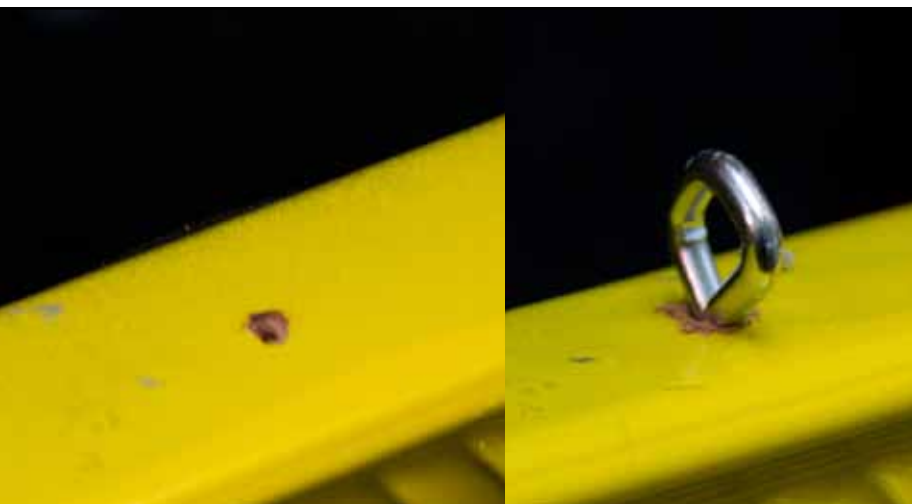
Measure the width and height of the backside of your frame again.

This time, use those measurements to cut out strips from the foam or felt material. These will serve as a backing for the frame as well as a protective element to combat any leftover sharp edges.

STEP 10



STEP 11



STEP 12



10

Using a hot glue gun, glue the strips of foam or felt to the backside of the frame.

The foam or felt material strips will help protect your walls when you hang your frame.

11

When the glue has dried, flip your frame upright and drill a hole big enough to fit an eyelet into, and then screw the eyelet in. Do the same for the other side. Try to place your holes at least 2" in at minimum.

12

Tie your jute string in a knot around the first eyelet. Your string can be however long you want – it depends how long or short you want it to hang. Tie the other end of the jute string around the eyelet on the other side, then hang and decorate as desired.